

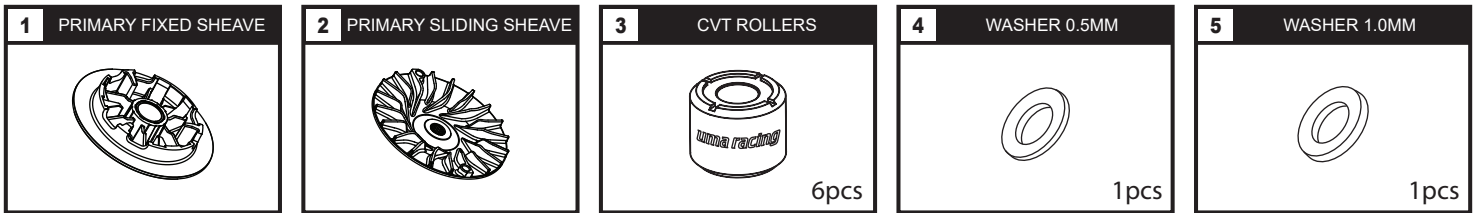
Please read this instruction manual carefully prior to installation. Keep this manual readily accessible for future reference.




ATTENTION

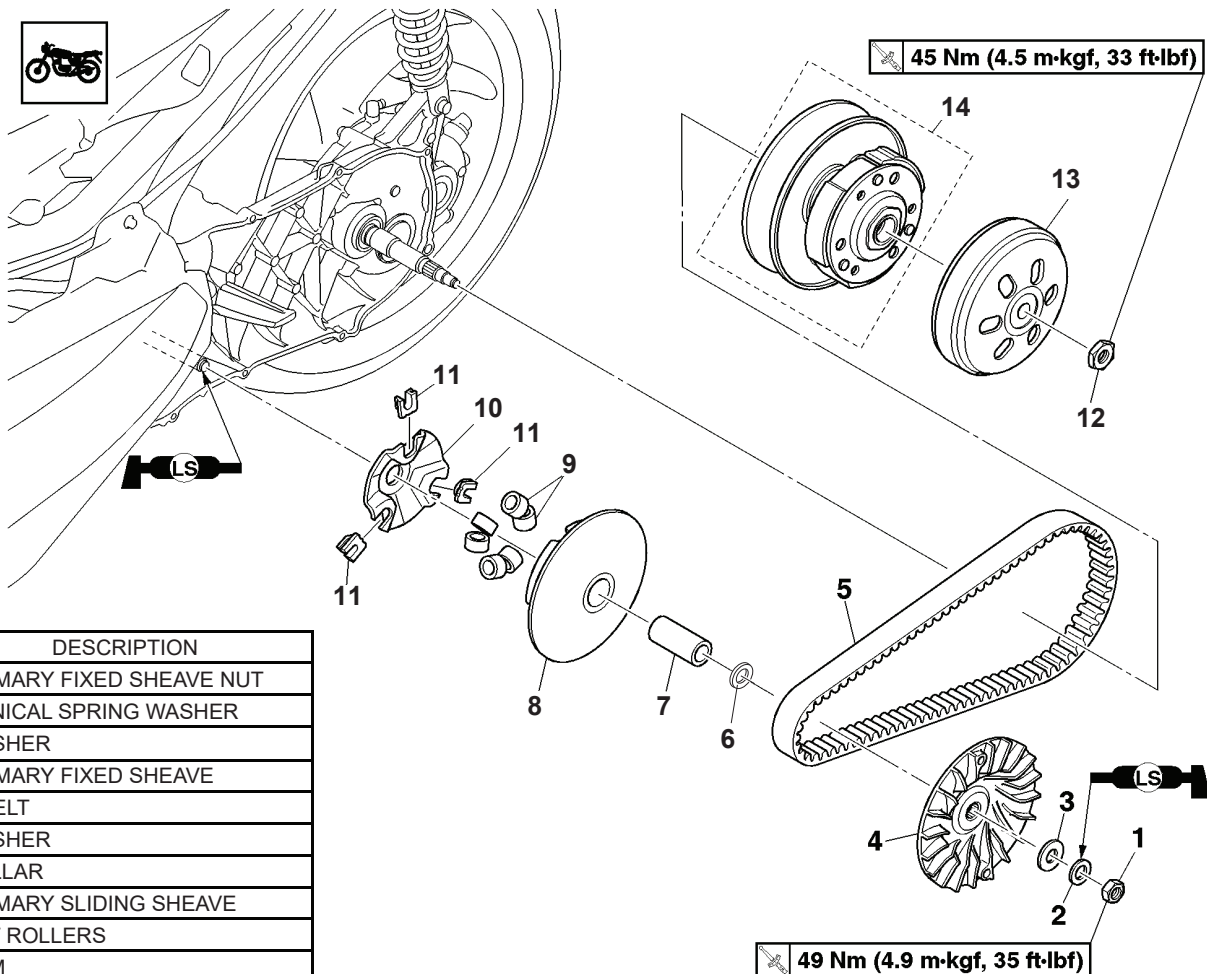
1. Upon installation, please ensure that your surrounding environment is clean, as it may affect it's precision.
2. We shall not be held liable and shall not accept any liability, obligation or responsibility whatsoever for any damage on the item during the course of assembly and/or disassembly.
3. Please seek professional assistance or advice if you are unclear of the instructions or have any doubts regarding the procedures.
4. Compatible for use with Yamaha NMAX155 / NVX155.

1 PARTS INCLUDED



2 INSTALLATION DIAGRAM

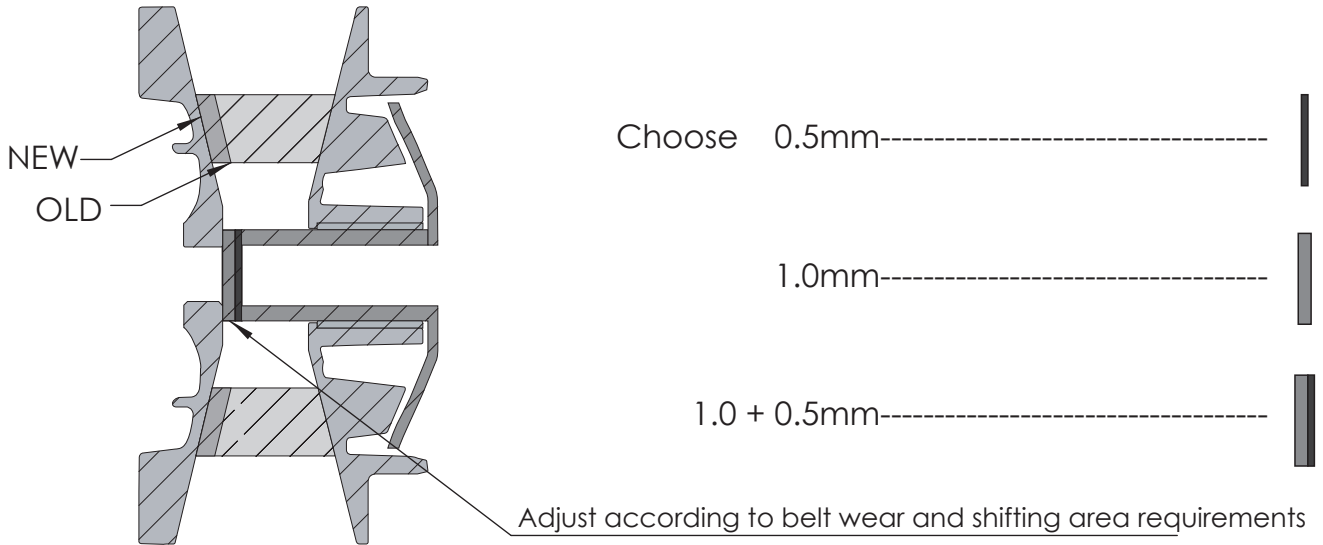
 : Lithium Soap-Based Grease



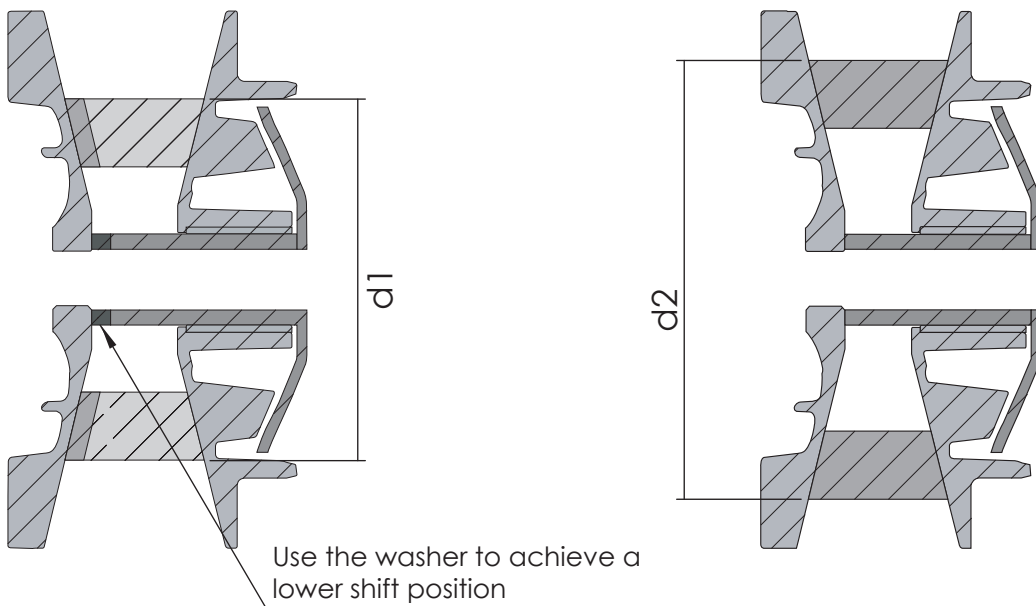
| S/NO | DESCRIPTION |
|------|---------------------------|
| 1. | PRIMARY FIXED SHEAVE NUT |
| 2. | CONICAL SPRING WASHER |
| 3. | WASHER |
| 4. | PRIMARY FIXED SHEAVE |
| 5. | V-BELT |
| 6. | WASHER |
| 7. | COLLAR |
| 8. | PRIMARY SLIDING SHEAVE |
| 9. | CVT ROLLERS |
| 10. | CAM |
| 11. | SLIDER |
| 12. | CLUTCH HOUSING NUT |
| 13. | CLUTCH HOUSING |
| 14. | SECONDARY SHEAVE ASSEMBLY |

3 ADJUSTMENT TIPS

1. When the belt is worn, please adjust

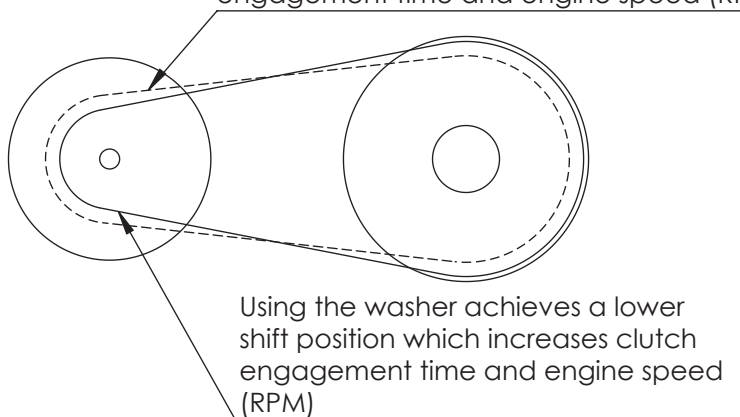


2. Using washers to adjust the shifting area



AT LOW SPEED

Without adding any washer, you will have higher gear positions which reduces clutch engagement time and engine speed (RPM)



AT HIGH SPEED

Without adding any washer, you will have higher gear positions

