

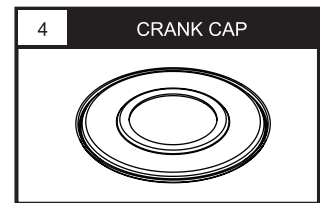
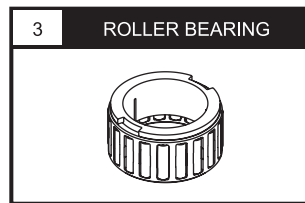
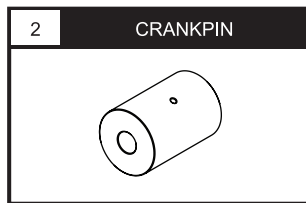
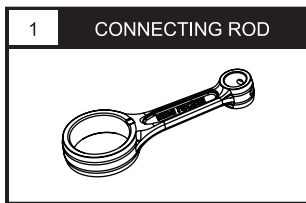
Thank you for purchasing this product. Please read the instruction carefully for details prior to installation.



ATTENTION

1. Prior to installation please ensure the environment or workplace is clean as it may affect its precision.
2. We shall not be held liable and shall not accept any liability, obligation or responsibility whatsoever for any damage on the item during assembly and disassembly.
3. Please seek professional assistance or advice if you are unclear of the instructions or have any doubts regarding the procedures.
4. Compatible for use with Honda RS150.

1 PARTS INCLUDED



NOTE Please ensure contents matches the above diagrams/figures. If there are missing or mismatched parts, please contact the dealer or seller where you bought from.

NOTE During disassembly of the crank assembly, the crank cap will most likely be damaged due to prying. Replace it with the included crank cap (Part no. 4)

2 INSTALLATION GUIDE

Figure 1

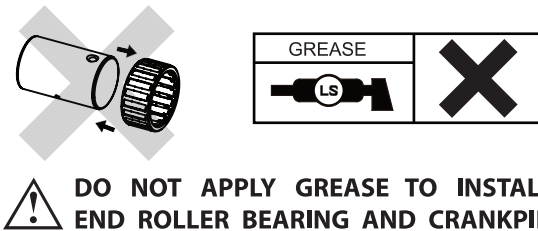
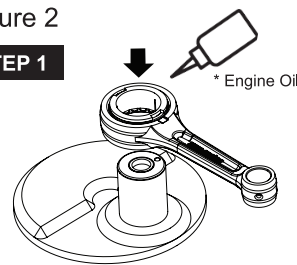


Figure 2

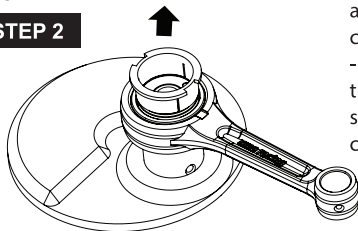
STEP 1



- Insert end roller bearing (Part No.3) into connecting rod (Part No. 1).
- End roller bearing should be attached partially
- Slot into the crankpin and attached onto the crankshaft

Figure 3

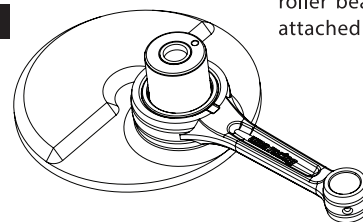
STEP 2



- Gently insert the connecting rod and end roller bearing onto the crankpin (Part No. 2).
- The plastic retainer attached to the end roller bearing should slide out upon installing onto the crankpin

Figure 4

STEP 3



- Slide in connecting rod and end roller bearing fully into crankpin attached to to the crankshaft.

Figure 5

CONNECTING ROD WIDTH



Figure 6

RS150R

ITEM	STANDARD	LIMIT
CRANK WIDTH "A"	---	---
MAX RUNOUT LIMIT "C"	---	0.03MM (0.012 IN)
BIG END SIDE CLEARANCE "D"	0.10 - 0.35 MM (0.0394 - 0.014 IN)	---
BIG END RADIAL CLEARANCE "E"	0 - 0.008 MM (0 - 0.0003 IN)	---

