

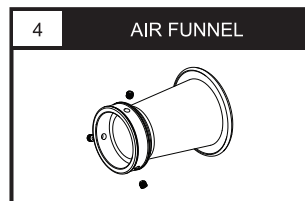
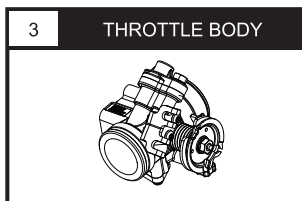
Thank you for purchasing this product. Please read the instruction carefully for details prior to installation.



ATTENTION

1. Prior to installation please ensure the environment or workplace is clean as it may affect its precision.
2. We shall not be held liable and shall not accept any liability, obligation or responsibility whatsoever for any damage on the item during assembly and disassembly.
3. Please seek professional assistance or advice if you are unclear of the instructions or have any doubts regarding the procedures.
4. Compatible for use with Yamaha Y15ZR / EXCITER150 / SNIPER150 / MX KING 150.

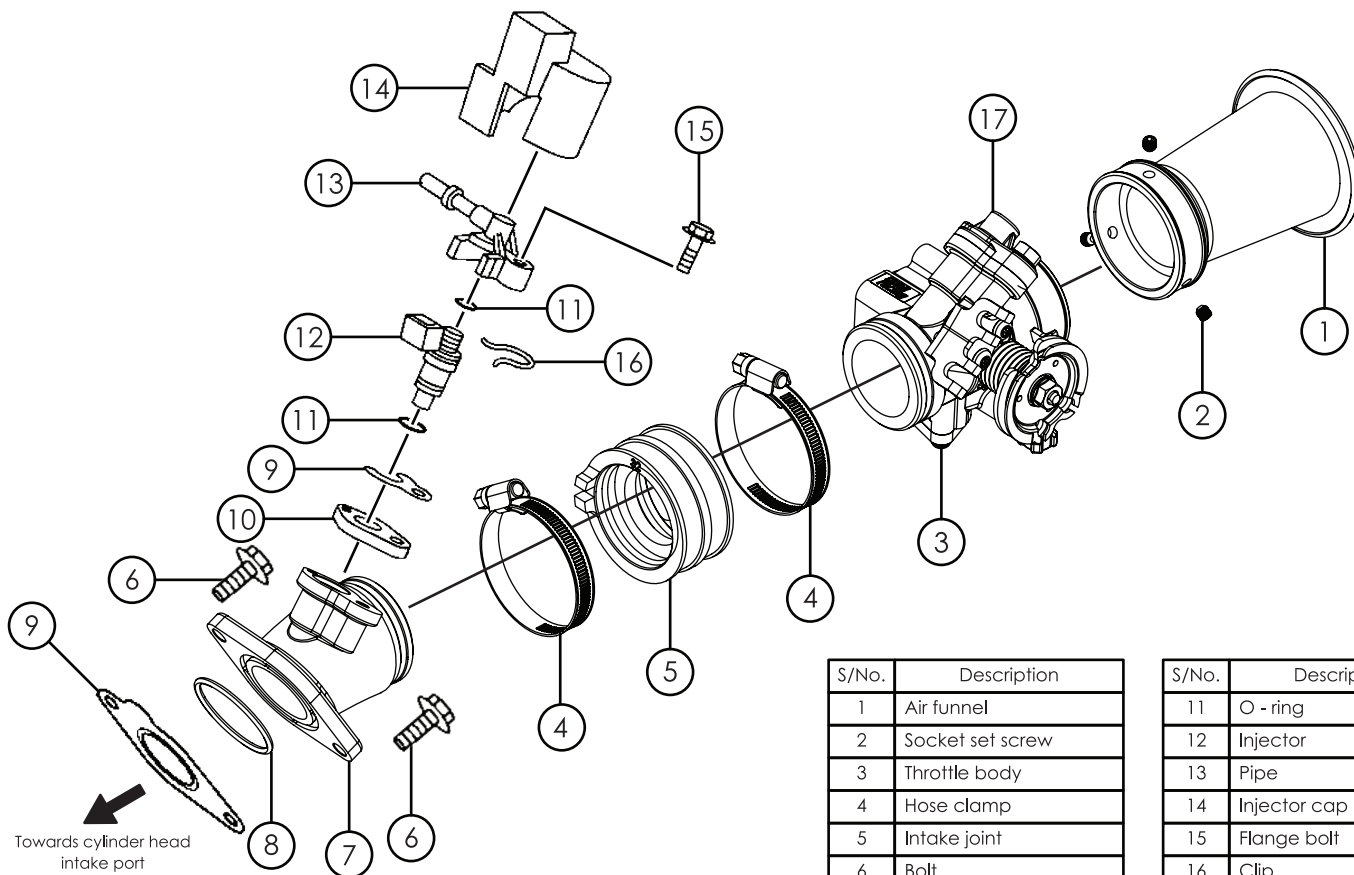
1 PARTS INCLUDED



NOTE Please ensure contents matches the above diagrams. If there are missing or mismatched parts, please contact the dealer or seller where you bought from.

NOTE Some parts are factory preassembled for convenience. Ensure the fasteners and fittings are fastened/ secured before installing the product onto the motorcycle.

2 ASSEMBLY DIAGRAM



S/No.	Description
1	Air funnel
2	Socket set screw
3	Throttle body
4	Hose clamp
5	Intake joint
6	Bolt
7	Intake manifold
8	O - ring
9	Gasket
10	Manifold gasket

S/No.	Description
11	O - ring
12	Injector
13	Pipe
14	Injector cap
15	Flange bolt
16	Clip
17	Dummy injector

Features a fuel injection port on the throttle body moving the fuel injection upstream which will give distance for the fuel mix to travel thus promoting better fuel atomisation with the air for more consistent and optimum power. For use with air cleaner box, the cleaner box will need to be modified to accommodate the air funnel.