

Thank you for purchasing this product. Please read the instruction carefully for details prior to installation.

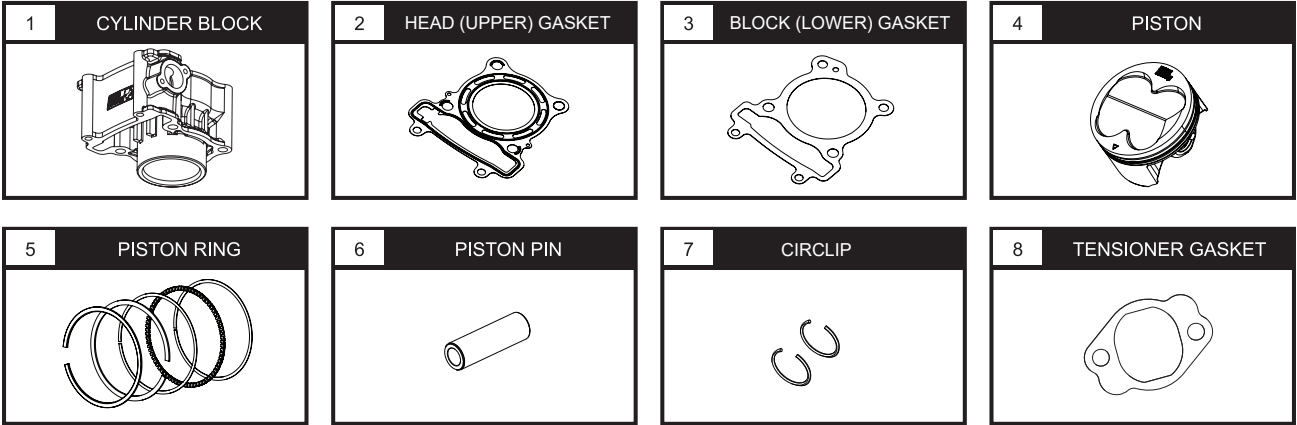


ATTENTION

1. Prior to installation please ensure the environment or workplace is clean as it may affect its precision.
2. We shall not be held liable and shall not accept any liability, obligation or responsibility whatsoever for any damage on the item during assembly and disassembly.
3. Please seek professional assistance or advice if you are unclear of the instructions and have any doubts.

1

PARTS INCLUDED

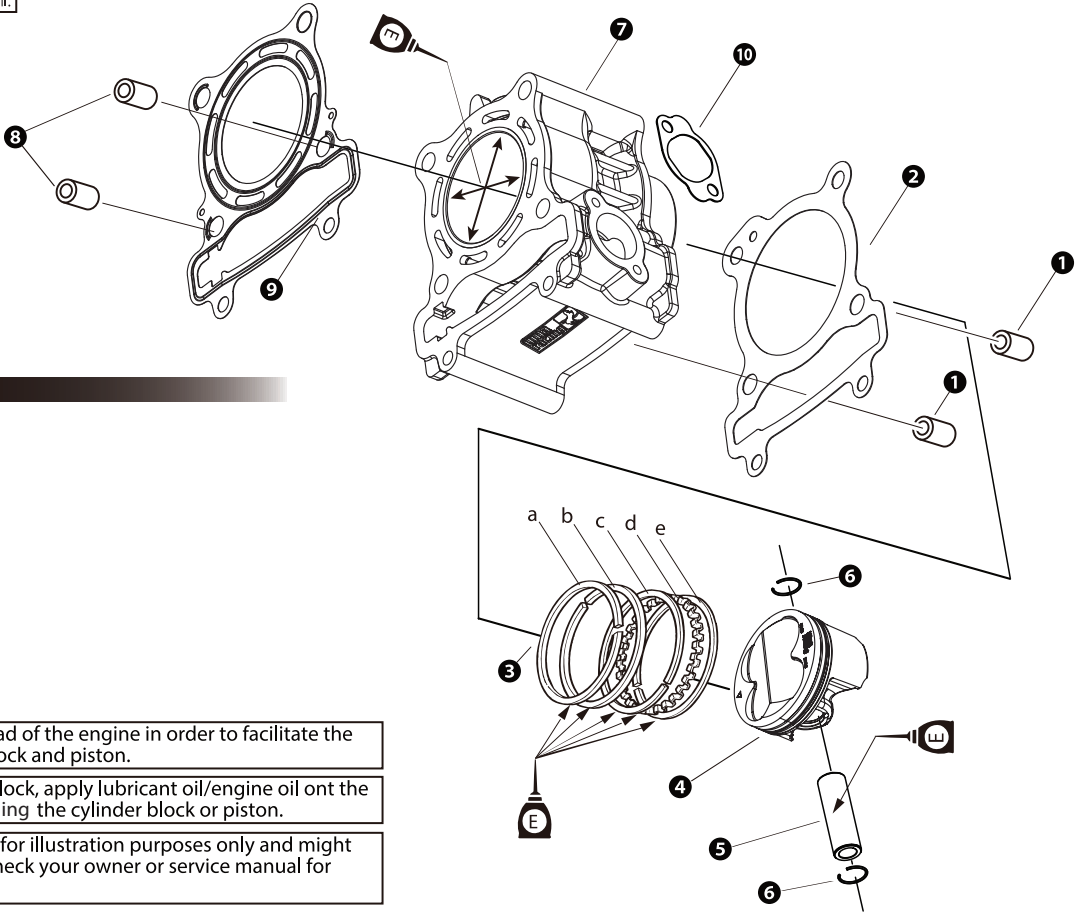


NOTE Please ensure contents matches the above diagrams. If there are missing or mismatched parts, please contact the dealer or seller where you bought from.

2

INSTALLATION DIAGRAM

NOTE To smear with engine oil.



Please proceed as following.

- 1 Dowel Pin
- 2 Block (Lower) Gasket
- 3 Piston Ring Set
- 4 Piston
- 5 Piston Pin
- 6 Circlip
- 7 Cylinder Block
- 8 Dowel Pin
- 9 Head (Upper) Gasket
- 10 Tensioner Gasket

⚠ Remove the entire cylinder head of the engine in order to facilitate the replacement of the cylinder block and piston.

⚠ Before installing the cylinder block, apply lubricant oil/engine oil on the cylinder sleeve to avoid damaging the cylinder block or piston.

NOTE Diagrams and figures are for illustration purposes only and might not be accurate. Please check your owner or service manual for accurate procedures.

Fig 1

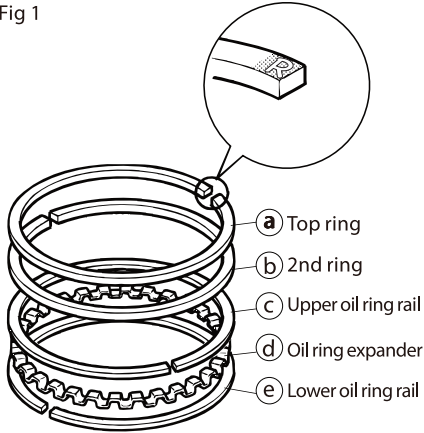


Fig 2

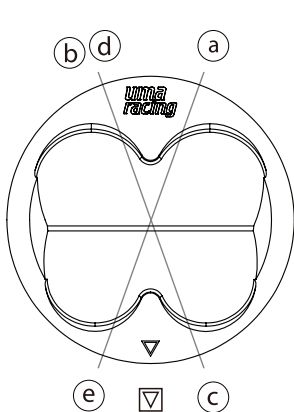
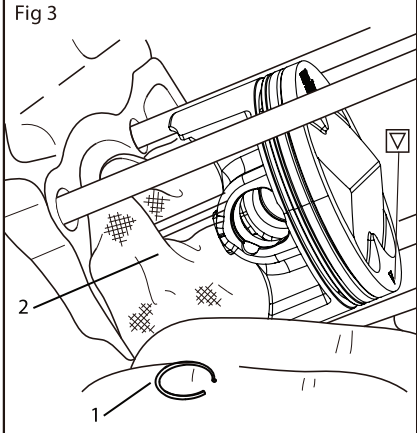


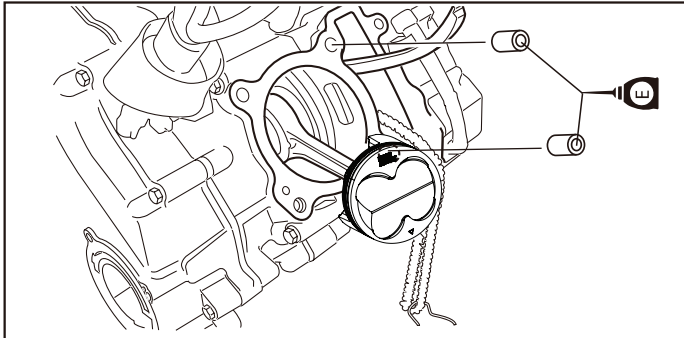
Fig 3



⚠ The mark on the ring must be faced up when install(As Fig 1 shows). Also the ring open side must be facing the position as Fig 2 shows.

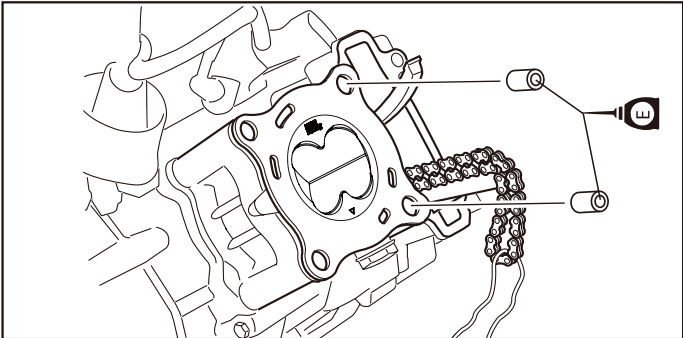
1 **NOTE** The mark on the top of piston must be aligned with exhaust port when install.

2 **NOTE** Prevent the circlip (1) from falling into the crankcase opening by covering it with a clean rag (2), as Fig. 3 shows.



1. Install the dowel pins and block (lower) gasket.

NOTE You may need to use lubricating oil when installation.



2. Install the cylinder block, dowel pins, and head (upper) gasket.