

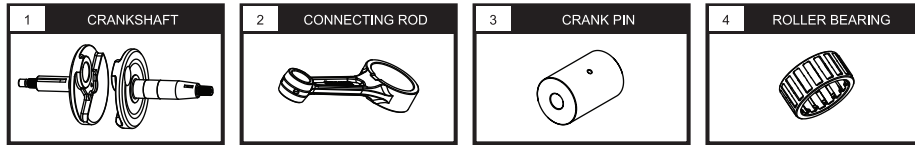
Please read this instruction manual carefully prior to installation. Keep this manual readily accessible for future reference.



ATTENTION

- Upon installation, please ensure that your surrounding environment is clean, as it may affect it's precision.
- We shall not be held liable and shall not accept any liability, obligation or responsibility whatsoever for any damage on the item during the course of assembly and/or disassembly.
- Please seek professional advice or assistance if you are unclear of the instructions or have any doubts regarding the procedures.
- Compatible for use with **YAMAHA Y15ZR / EXCITER150 / SNIPER150 / MX KING.**

1 PARTS INCLUDED



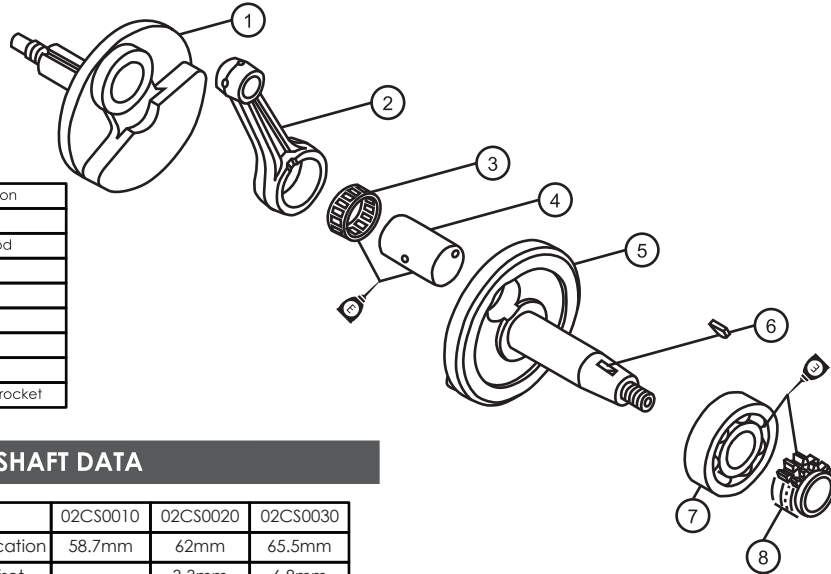
NOTE Please ensure contents matches the above diagrams. If there are missing or mismatched parts, kindly contact the dealer or seller where the purchase was made.

NOTE Some parts are factory pre-assembled for ease of installation.

2 INSTALLATION DIAGRAM

NOTE Unless otherwise indicated, do not use grease to install inner crankcase parts.

To apply / smear with lubricant or engine oil.



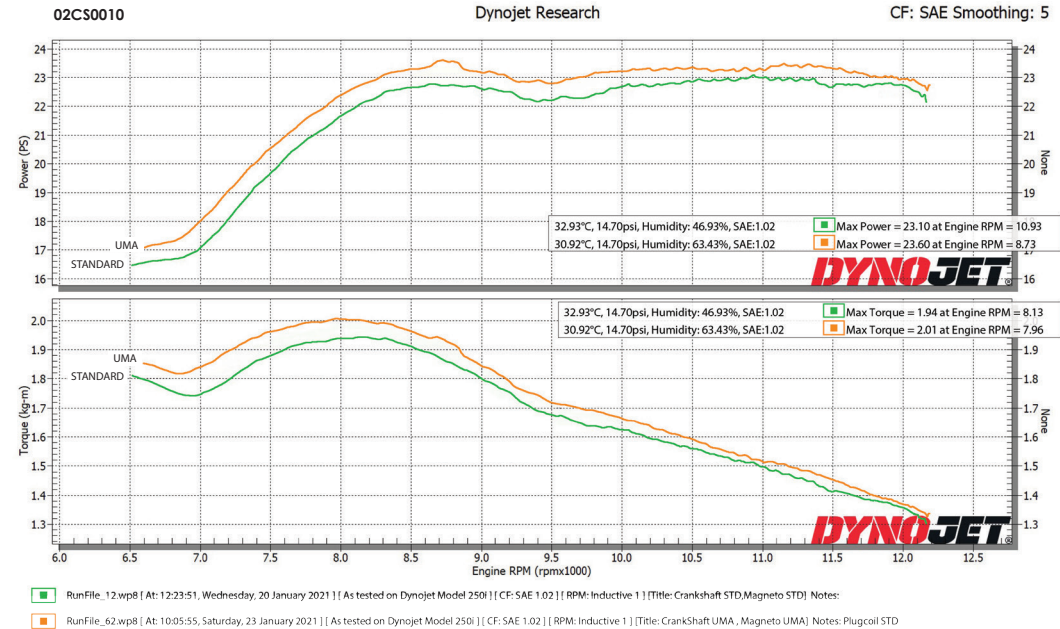
S/No.	Description
1	Crankshaft 1
2	Connecting Rod
3	Roller Bearing
4	Crank Pin
5	Crankshaft 2
6	Woodruff Key
7	Bearing
8	Cam Chain Sprocket

3 CRANKSHAFT DATA

Product Code	02CS0010	02CS0020	02CS0030
Crankshaft Specification	58.7mm	62mm	65.5mm
Stroke Up Total Offset	-	3.3mm	6.8mm
Rod Length	100mm	104mm	109mm
Crank Pin Diameter	28mm	26mm	26mm
Main Bearing Diameter	25mm	25mm	25mm
Chain Link	96L	98L	100L

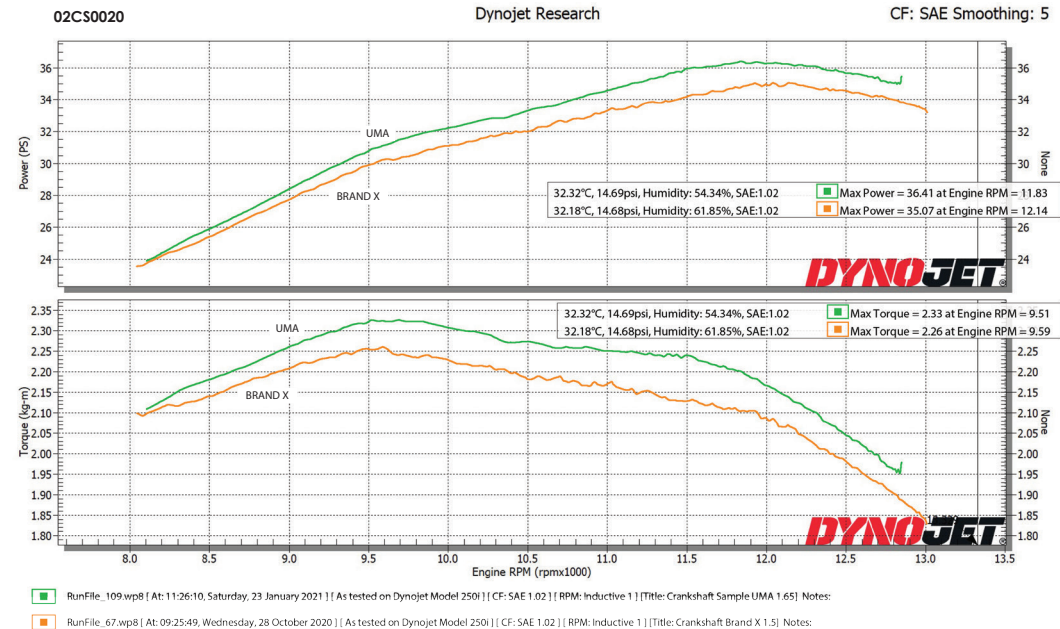


4 DYNO GRAPH DATA



NOTE Piston = 57mm Crankshaft = 58.7mm Camshaft = R3 Valve Size: 22/19

DISCLAIMER Performance results may vary due to various factors such as atmospheric conditions, fuel, mixtures, accompanying parts, etc.



NOTE Piston = 65mm Valve Size: 25/22

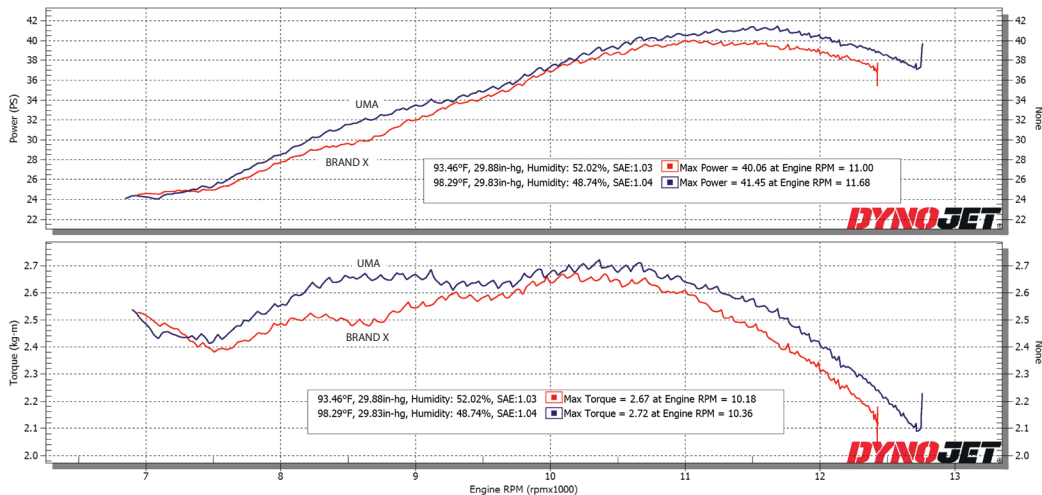
DISCLAIMER Performance results may vary due to various factors such as atmospheric conditions, fuel, mixtures, accompanying parts, etc.



02CS0030

Dynojet Research

CF: SAE Smoothing: 5



RunFile_66.wp8 [At: 12:23:42 PM, Wednesday, 25 August, 2021] [As tested on Dynojet Model 250i] [CF: SAE 1.03] [RPM: Inductive 1] [Title: Brand X - 66.7 102] Notes:

RunFile_2.wp8 [At: 10:17:26 AM, Wednesday, 13 October, 2021] [As tested on Dynojet Model 250i] [CF: SAE 1.04] [RPM: Inductive 1] [Title: UMA Racing Crankshaft - 65mm 109] Notes:

NOTE Piston = 65mm Valve Size = 25/22

DISCLAIMER Performance results may vary due to various factors such as atmospheric conditions, fuel, mixtures, accompanying parts, etc.



USER MANUAL

UMA RACING SDN BHD (591428-P)

NO. 40, JALAN TPP5, TAMAN PERINDUSTRIAN PUTRA,
47130 PUCHONG, SELANGOR DARUL EHSAN, MALAYSIA
HOTLINE: +603 5033 5833 FAX: +603 2773 9011

www.umaracing.com

