

Please read this instruction manual carefully prior to installation. Keep this manual readily accessible for future reference.

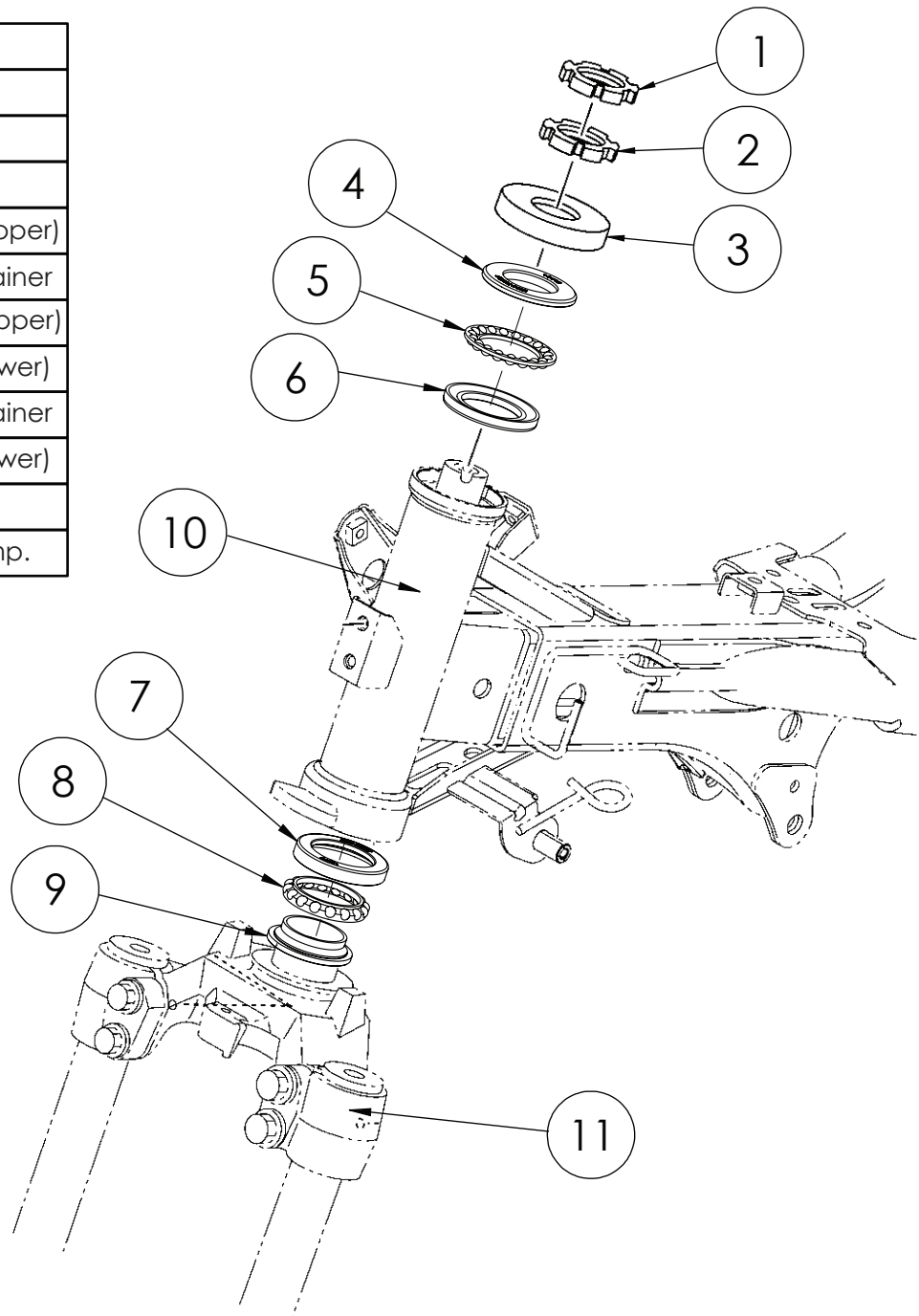


ATTENTION

1. Upon installation, please ensure that your surrounding environment is clean, as it may affect its precision.
2. We shall not be held liable and shall not accept any liability, obligation, or responsibility whatsoever for any damage to the item during the course of assembly and/or disassembly.
3. Please seek professional assistance or advice if you are unclear about the instructions or have any doubts regarding the procedures.

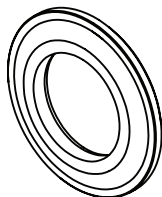
1 DIAGRAM

S/No.	Description
1	Steering nut
2	Steering nut
3	Cover
4	Bearing cover 1 (upper)
5	Ball bearing w/ retainer
6	Bearing cover 2 (upper)
7	Bearing cover 2 (lower)
8	Ball bearing w/ retainer
9	Bearing cover 1 (lower)
10	Body frame
11	Under bracket comp.



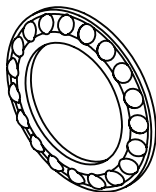
1

BEARING COVER 1 (Upper)



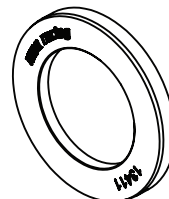
2

BALL BEARING w/ RETAINER



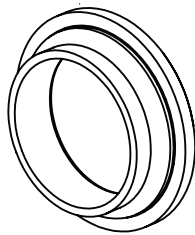
3

BEARING COVER 2 (Upper)



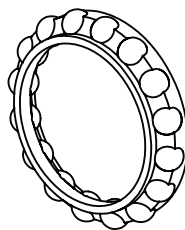
4

BEARING COVER 1 (Lower)



5

BALL BEARING w/ RETAINER



6

BEARING COVER 2 (Lower)

