

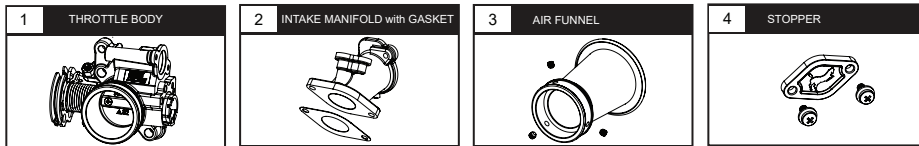
Please read this instruction manual carefully prior to installation. Keep this manual readily accessible for future reference.



## ATTENTION

1. Prior to installation please ensure the environment or workplace is clean as it may affect its precision.
2. We shall not be held liable and shall not accept any liability, obligation or responsibility whatsoever for any damage on the item during assembly and disassembly.
3. Please seek professional assistance or advice if you are unclear of the instructions or have any doubts regarding the procedures.
4. Compatible for use with Yamaha LC135 FI V8 only (with stopper).

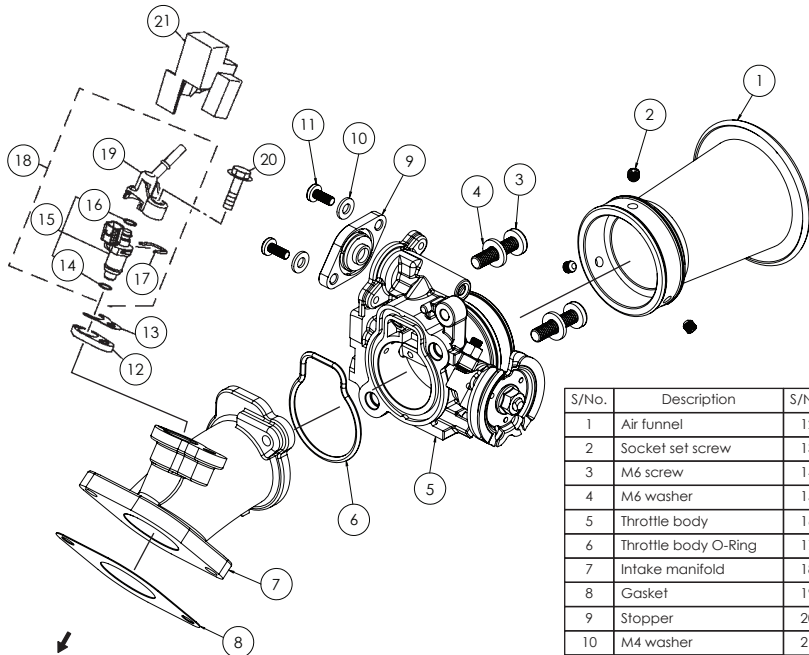
## 1 PARTS INCLUDED



**NOTE** Please ensure contents match the above diagrams. If there are missing or mismatched parts, please contact the dealer or seller where you bought from.

**NOTE** Some parts are factory preassembled for convenience. Ensure the fasteners and fittings are fastened/ secured before installing the product onto the motorcycle.

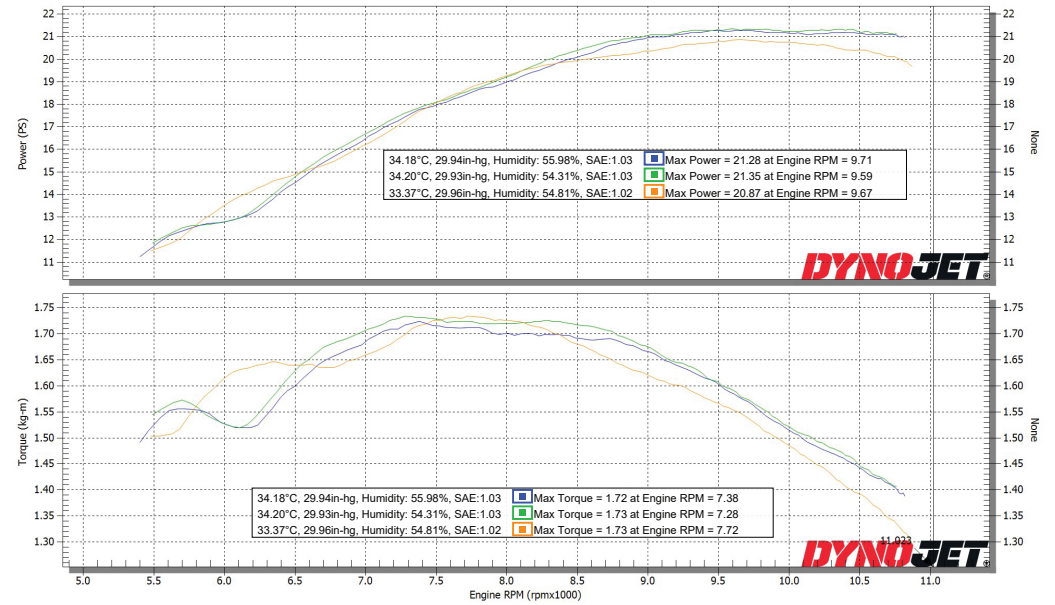
## 2 ASSEMBLY DIAGRAM



Towards cylinder head  
intake port

S/No.	Description	S/No.	Description
1	Air funnel	12	Manifold gasket
2	Socket set screw	13	Gasket
3	M6 screw	14	O-Ring
4	M6 washer	15	Injector
5	Throttle body	16	O-Ring
6	Throttle body O-Ring	17	Clip
7	Intake manifold	18	Injector assy
8	Gasket	19	Injector pipe
9	Stopper	20	Flange bolt M6
10	M4 washer	21	Injector cap
11	M4 screw		

Features a fuel injection port on the throttle body moving the fuel injection upstream which will give distance for the fuel mix to travel thus promoting better fuel atomisation with the air for more consistent and optimum power. For use with air cleaner box, the cleaner box will need to be modified to accommodate the air funnel.



- RunFile\_37.wp8 [ At: 11:21:03 AM, Tuesday, 10 October, 2023 ] [ As tested on Dynojet Model 250i ] [ CF: SAE 1.03 ] [ RPM: Inductive 1 ] [ AFR Source: Dynoware RT WB ] [Title: TB 34mm]
- RunFile\_56.wp8 [ At: 11:52:11 AM, Tuesday, 10 October, 2023 ] [ As tested on Dynojet Model 250i ] [ CF: SAE 1.03 ] [ RPM: Inductive 1 ] [ AFR Source: Dynoware RT WB ] [Title: TB 32mm]
- RunFile\_83.wp8 [ At: 10:13:32 AM, Friday, 13 October, 2023 ] [ As tested on Dynojet Model 250i ] [ CF: SAE 1.02 ] [ RPM: Inductive 1 ] [ AFR Source: Dynoware RT WB ] [Title: TB Stock]

**NOTE** Spec = Fully LC135 V8 standard

**DISCLAIMER** Performance results may vary due to various factors such as atmospheric conditions, fuel, mixtures, accompanying parts, etc.

