

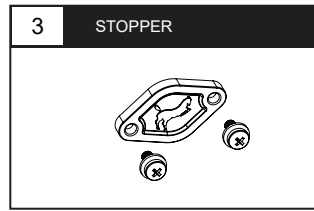
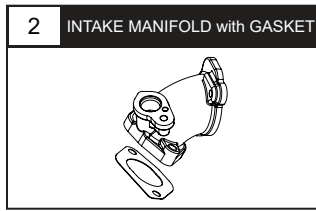
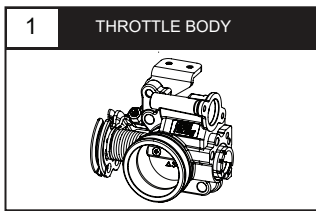
Please read this instruction manual carefully prior to installation. Keep this manual readily accessible for future reference.



### ATTENTION

1. Prior to installation please ensure the environment or workplace is clean as it may affect its precision.
2. We shall not be held liable and shall not accept any liability, obligation or responsibility whatsoever for any damage on the item during assembly and disassembly.
3. Please seek professional assistance or advice if you are unclear of the instructions or have any doubts regarding the procedures.
4. Compatible for use with NMAX v2 / NVX v1&v2 / AEROX v1&v2 (with stopper).

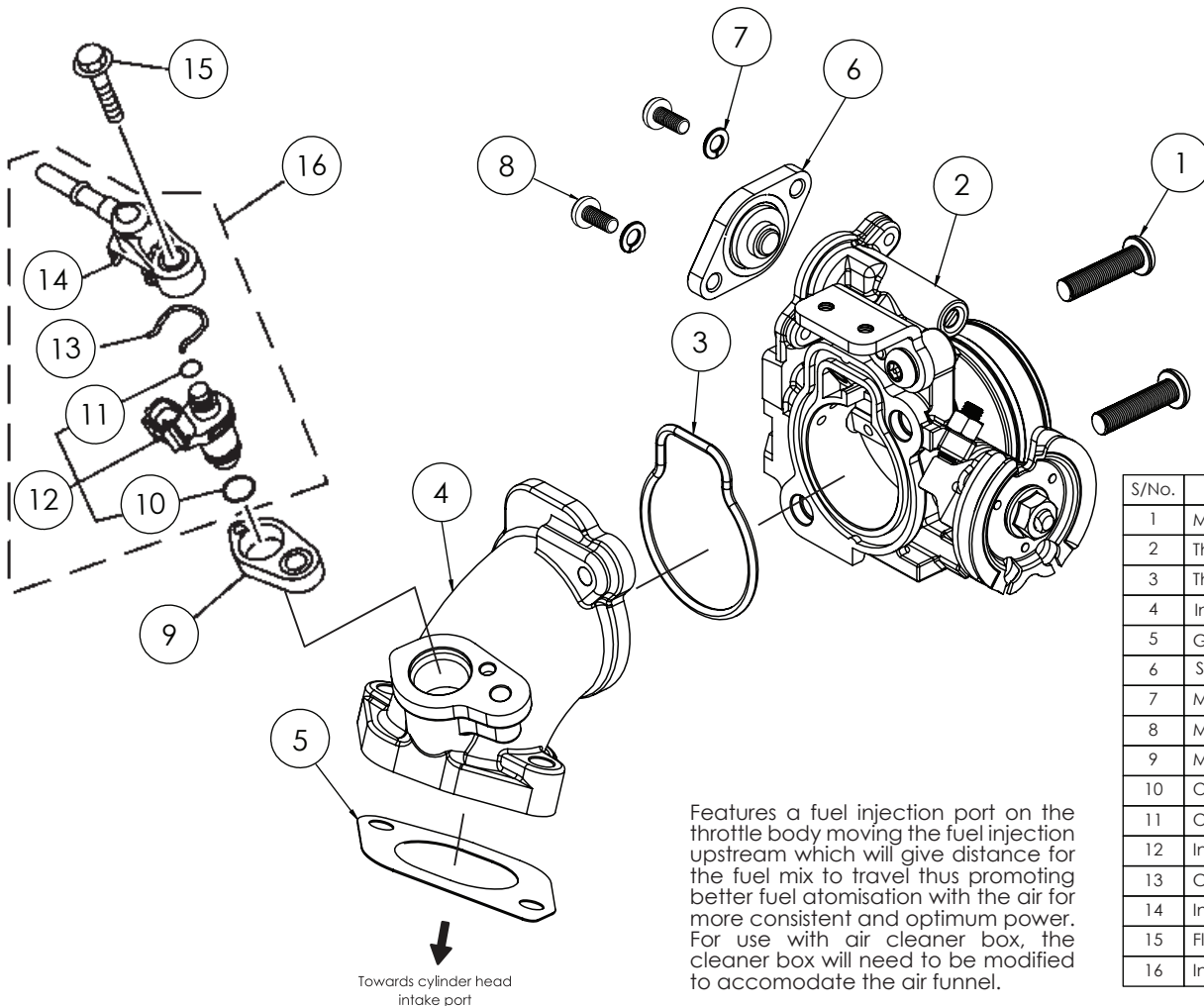
## 1 PARTS INCLUDED



**NOTE** Please ensure contents matches the above diagrams. If there are missing or mismatched parts, please contact the dealer or seller where you bought from.

**NOTE** Some parts are factory preassembled for convenience. Ensure the fasteners and fittings are fastened/ secured before installing the product onto the motorcycle.

## 2 ASSEMBLY DIAGRAM



S/No.	Description
1	M6 screw
2	Throttle body
3	Throttle body O-Ring
4	Intake manifold
5	Gasket
6	Stopper
7	M4 Washer
8	M4 screw
9	Manifold gasket
10	O-Ring
11	O-Ring
12	Injector
13	Clip
14	Injector pipe
15	Flange bolt M6
16	Injector assy

Features a fuel injection port on the throttle body moving the fuel injection upstream which will give distance for the fuel mix to travel thus promoting better fuel atomisation with the air for more consistent and optimum power. For use with air cleaner box, the cleaner box will need to be modified to accommodate the air funnel.