

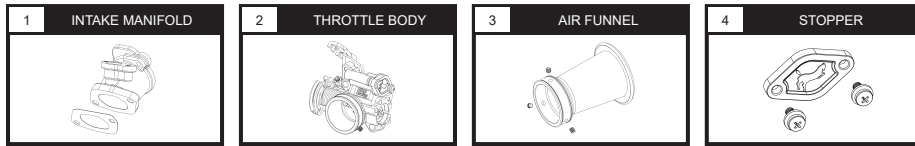
Please read this instruction manual carefully prior to installation. Keep this manual readily accessible for future reference.



## ATTENTION

1. Prior to installation please ensure the environment or workplace is clean as it may affect its precision.
2. We shall not be held liable and shall not accept any liability, obligation or responsibility whatsoever for any damage on the item during assembly and disassembly.
3. Please seek professional assistance or advice if you are unclear of the instructions or have any doubts regarding the procedures.
4. Compatible for use with Yamaha R15V3 / Y16ZR / Exciter 155 (with stopper)

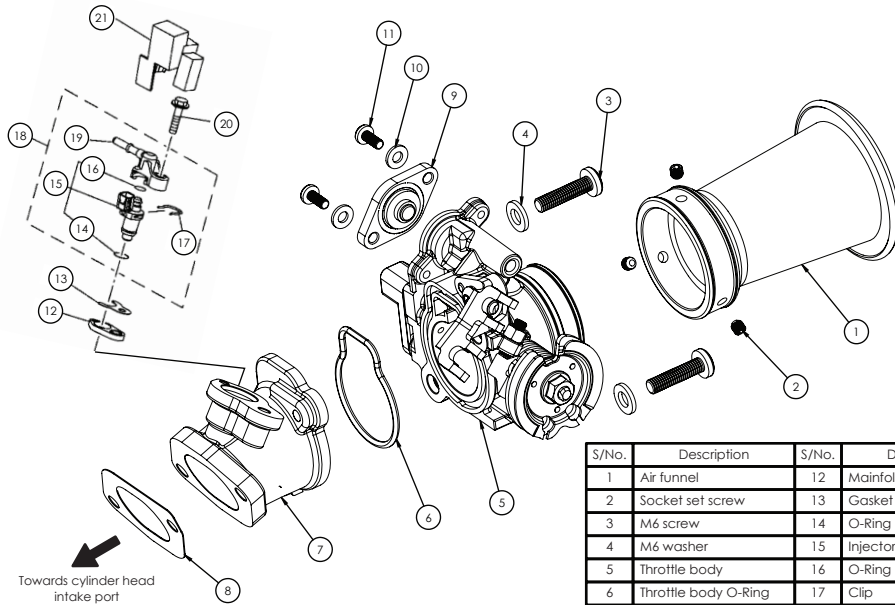
## 1 PARTS INCLUDED



**NOTE** Please ensure contents match the above diagrams. If there are missing or mismatched parts, please contact the dealer or seller where you bought from.

**NOTE** Some parts are factory preassembled for convenience. Ensure the fasteners and fittings are fastened/ secured before installing the product onto the motorcycle.

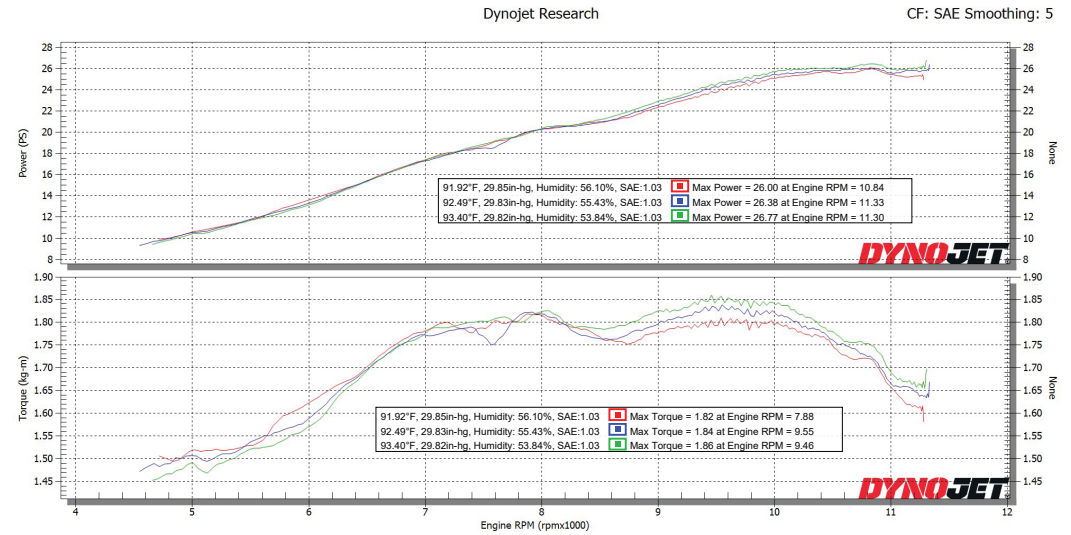
## 2 ASSEMBLY DIAGRAM



S/No.	Description	S/No.	Description
1	Air funnel	12	Mainfold gasket
2	Socket set screw	13	Gasket
3	M6 screw	14	O-Ring
4	M6 washer	15	injector
5	Throttle body	16	O-Ring
6	Throttle body O-Ring	17	Clip
7	Intake manifold	18	injector assy
8	Gasket	19	injector pipe
9	Stopper	20	Flange bolt M6
10	M4 washer	21	Injector cap
11	M4 screw		

Features a fuel injection port on the throttle body moving the fuel injection upstream which will give distance for the fuel mix to travel thus promoting better fuel atomisation with the air for more consistent and optimum power. For use with air cleaner box, the cleaner box will need to be modified to accommodate the air funnel.

## 3 DYNO GRAPH DATA



- RunFile\_45.wp8 [ At: 3:28:27 PM, Tuesday, 18 January, 2022 ] [ As tested on Dynojet Model 250i ] [ CF: SAE 1.03 ] [ RPM: Inductive 1 ] [ Title: Stock Throttle Body 30mm ]
- RunFile\_21.wp8 [ At: 4:14:41 PM, Tuesday, 18 January, 2022 ] [ As tested on Dynojet Model 250i ] [ CF: SAE 1.03 ] [ RPM: Inductive 1 ] [ Title: UMA 32mm ]
- RunFile\_36.wp8 [ At: 5:28:51 PM, Tuesday, 18 January, 2022 ] [ As tested on Dynojet Model 250i ] [ CF: SAE 1.03 ] [ RPM: Inductive 1 ] [ Title: UMA 34mm ]

**NOTE** Engine spec = standard head, 63mm cylinder block, aftermarket camshaft, free flow exhaust.

**DISCLAIMER** Performance results may vary due to various factors such as atmospheric conditions, fuel, mixtures, accompanying parts, etc.